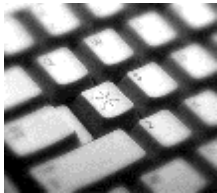


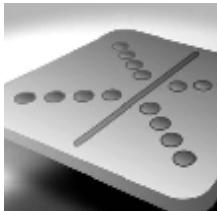


## Software Deployment Risk Matrix

---



Customer NA



## DOCUMENT CONTROL

Copyright © Kallik, 2016

Reference Code : SDRM - 046  
Revision : 1.2  
Issue Date : 12<sup>th</sup> May 2016  
Author(s) : Software Development Manager  
Authorizer(s) : Operations Director  
Issuer : Software Development Manager

### DOCUMENT HISTORY

---

Date	Revision	Change
12 <sup>th</sup> May 2016	0.1	Internal review
12 <sup>th</sup> May 2016	1.0	Customer release
18 <sup>th</sup> May 2016	1.1	Added IN5982/8278
1 <sup>st</sup> June 2016	1.2	Added IN6207, IN6209, IN6211, IN6189, RQ1446

## Table of Contents

DOCUMENT CONTROL .....	2
Table of Contents .....	3
Document Overview.....	4
What is Risk? .....	4
Levels of Risk .....	4
Annex 1 - Key Changes for Release 5.3.6 .....	5
Risk Assessment for Release 5.3.6 .....	6
Appendix .....	9

## Document Overview

This document has been created as a guide to help clients understand the “risk” of the deployment of a new software release.

The document will detail the main areas where enhancements have been made to the applications and the level of risk associated to deploying the new release.

## What is Risk?

Risk is defined as the possibility of suffering a loss. Risk in itself is not bad. Risk is essential to progress and failure is often a key part of learning. Managing risk is a key part of success.

When deploying a new software release, the risks can be broken down into different types

1. Risk to existing data integrity - will there be any impact on data currently held in the application?
2. Risk to new data integrity - will there be any impact on any new data uploaded into the application?
3. Risk to existing functionality - will there be an impact on how the existing functionality works?
4. Risk To User - will there be any changes to current working practices for the users

## Levels of Risk

The purpose of the following table is to explain:-

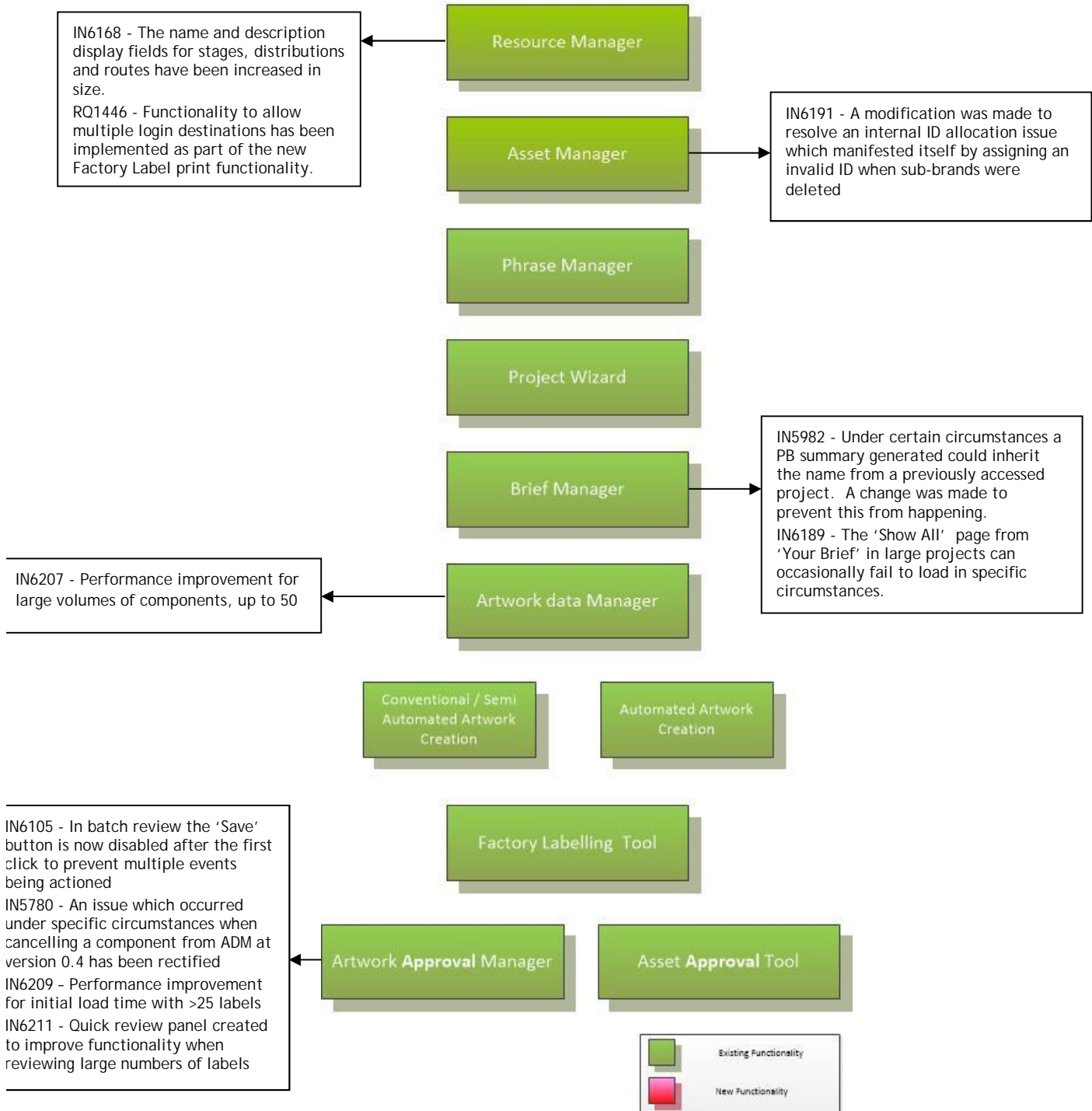
1. How Kallik categorise the level of risk
2. What supplementary action would be required
3. What level of risk is associated to the release. This is shown in detail

## Risk Categorisation

Indicator	Risk level	Description	Supplementary
<b>i</b>	None	No risk to release	No impact to user
<b>l</b>	Low	A low level of risk.	Risk addressed by <ul style="list-style-type: none"> <li>· Issue of updated user documentation.</li> </ul> No change to current working practices
<b>m</b>	Medium	A medium level of risk	Risk addressed by <ul style="list-style-type: none"> <li>· Issue of updated user documentation.</li> <li>· Client Education needed on new feature.</li> </ul> No change to current working practice
<b>h</b>	High	High level of risk to the release	Risk addressed by <ul style="list-style-type: none"> <li>· Creation of new User documentation.</li> <li>· User training required before application can be used in production.</li> </ul> Changes required to current working practice

## Annex 1 – Key Changes for Release 5.3.6

### AMS 360 Functionality



**Risk Assessment for Release 5.3.6**

Kallik Reference #	Test Case Reference #	Description	Linked to Functionality	Risk to existing Data Integrity	Risk to new Data Integrity	Risk to existing functionality	Risk To User	Contingency
IN6178, nService 8588	NA	The 'Current Artworks Stored in AMS' report no longer automatically runs on launch to allow users to filter expected data before running large reports	BI	i	i	i	i	No contingency required
IN6153, nService 8399	TC1605	A change was made to the Lightbox Summary report export functionality to allow export to MS Word docx format when hyperlink expressions are included in artwork thumbnail images	BI	i	i	i	i	No contingency required
IN5955, nService 7337	TC2872, TC2873, TC2874, TC2875, TC2876, TC2877, TC2878, TC2879, TC2583, TC2586	This release contains a minor update to the Daeja module. Various issues related to the display of masked and clipped areas in the Daeja artwork viewer were resolved. This can be applied on a client by client basis.	Daeja	l	l	l	i	No contingency needed
IN6191, nService 8652	TC3011, TC2129, TC2130	A modification was made to resolve an internal ID allocation issue which manifested itself by assigning an invalid ID when sub-brands were updated	DAM	i	i	i	i	No contingency needed
IN6176, nService 8593	TC3009, TC2424	A change was made to ensure that a potential issue arising through duplication of user login details recording concurrent user access will no longer prevent a user from accessing the system	AMS	i	i	i	i	No contingency needed

IN6168, nService 8580	TC0293, TC0294, TC0295, TC2384	The name and description display fields for stages, distributions and routes have been increased in size	RM	i	i	i	i	No contingency needed
IN6105, nService 8491	TC2010, TC2014, TC2114, TC2115	In batch review the 'Save' button is now disabled after the first click to prevent multiple events being actioned.	WFM	i	i	i	i	No contingency needed
IN5780, nService 7825	TC1929, TC1939, TC2068, TC2024, TC2025, TC1987, TC1563	An issue which occurred under specific circumstances when cancelling a component from ADM at version 0.4 has been rectified	WFM	i	i	i	i	No contingency needed
IN5982, nService 8278	TC2192	Under certain circumstances a PB summary generated could inherit the name from a previously accessed project. A change was made to prevent this from happening.	BM	i	i	i	i	No contingency needed
IN6189, nService 8644	TC2368	The 'Show All' page from 'Your Brief' in large projects can occasionally fail to load in specific circumstances.	BM	i	i	i	i	No contingency needed
IN6207	NA	Performance improvement for large volumes of components, up to 50	ADM	i	i	i	i	No contingency needed
IN6209, nService 8586	TC2112, TC2113, TC2114, TC2115, TC2009, TC2010, TC2014	Performance improvement for initial load time with >25 labels	WFM	i	i	i	i	No contingency needed
IN6211	TC2110, TC2111, TC2112, TC2113, TC2114, TC2115, TC2522, TC2675, TC2922, TC1997,	Quick review panel created to improve functionality when reviewing large numbers of labels	WFM	i	i	i	i	No contingency needed

AMS Deployment Risk Matrix

---

	TC2008, TC2009, TC2010, TC2014, TC2020, TC2022, TC2523							
RQ1446	TC3000, TC3008	Functionality to allow multiple login destinations has been implemented as part of the new Factory Label print functionality	RM	i	i	i	i	No contingency needed



## Appendix

5.3.6 will see the beta release of a specific set of advanced Factory Label print execution functions and user interface commissioned by a subset of Kallik customers. This will not affect the user-ship of the current Factory Labelling solution by existing customers. In all respects this Factory Labels functionality is to be considered a new license-based module offering a path towards end-to-end factory label execution.

As of September 2016 this product will become available for general release and customers will be invited to a webinar to understand the new functionality provided.

Low risk, independent functionality.