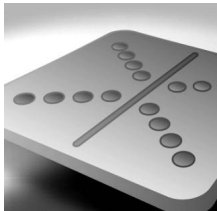




Software Deployment Risk Matrix



Customer NA



DOCUMENT CONTROL

Copyright © Kallik, 2016

Reference Code : SDRM - 048
Revision : 1.1
Issue Date : 26th August 2016
Re-Issue Date : 26th September 2016
Author(s) : Software Development Manager
Authorizer(s) : COO
Issuer : Software Development Manager

DOCUMENT HISTORY

Date	Revision	Change
26 th August 2016	0.1	Internal review
26 th August 2016	1.0	Customer release
21 st September 2016	1.1	IN6375, IN6347, IN6283, IN5998, IN6461, RQ1477, RQ1722, RQ1718, RQ1719

Table of Contents

DOCUMENT CONTROL	2
Table of Contents	3
Document Overview.....	4
What is Risk?	4
Levels of Risk	4
Annex 1 - Key Changes for Release 5.3.8	5
Risk Assessment for Release 5.3.8	6
Appendix	9

Document Overview

This document has been created as a guide to help clients understand the “risk” of the deployment of a new software release.

The document will detail the main areas where enhancements have been made to the applications and the level of risk associated to deploying the new release.

What is Risk?

Risk is defined as the possibility of suffering a loss. Risk in itself is not bad. Risk is essential to progress and failure is often a key part of learning. Managing risk is a key part of success.

When deploying a new software release, the risks can be broken down into different types

1. Risk to existing data integrity - will there be any impact on data currently held in the application?
2. Risk to new data integrity - will there be any impact on any new data uploaded into the application?
3. Risk to existing functionality - will there be an impact on how the existing functionality works?
4. Risk To User - will there be any changes to current working practices for the users

Levels of Risk

The purpose of the following table is to explain:-

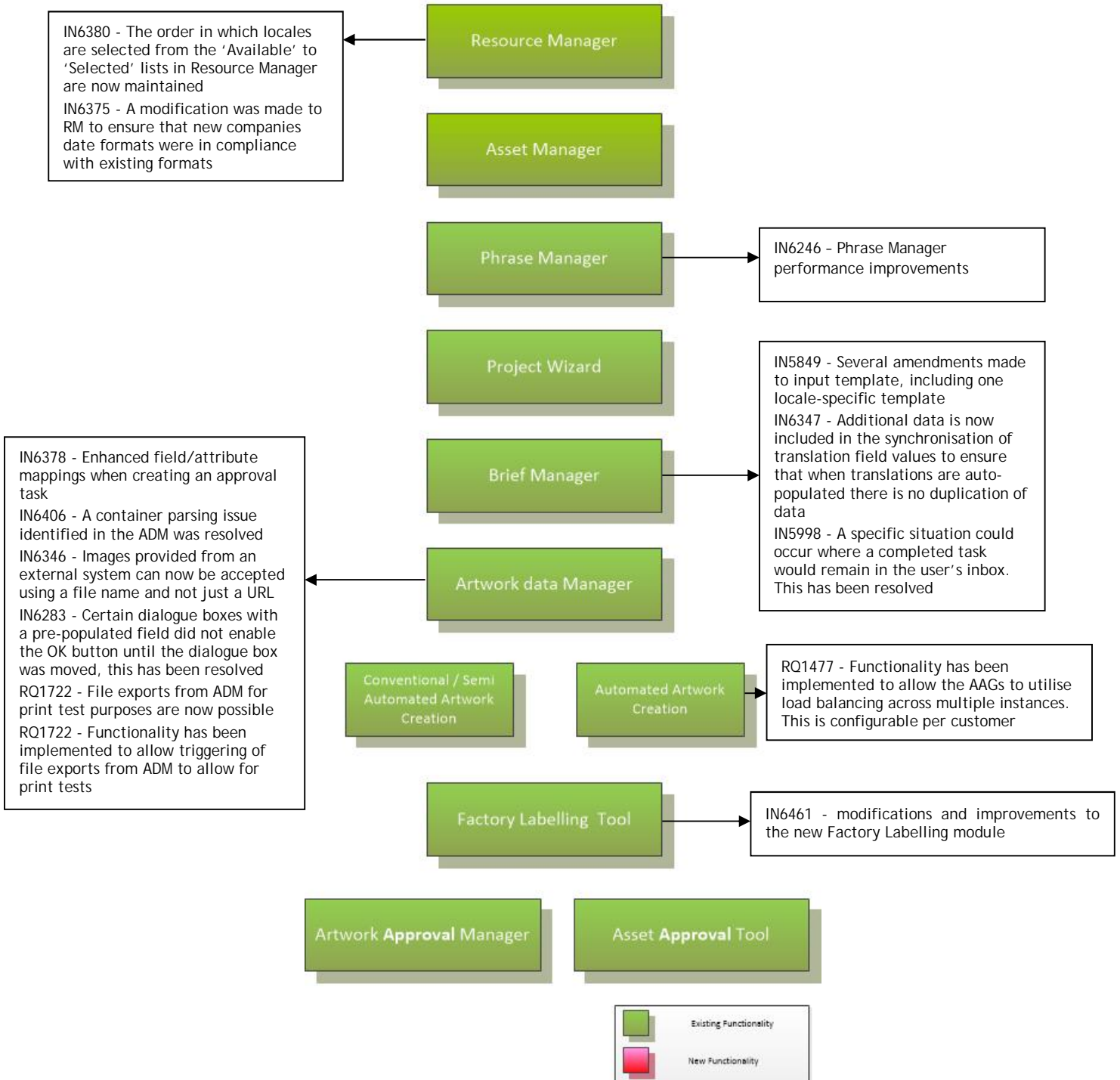
1. How Kallik categorise the level of risk
2. What supplementary action would be required
3. What level of risk is associated to the release. This is shown in detail

Risk Categorisation

Indicator	Risk level	Description	Supplementary
i	None	No risk to release	No impact to user
l	Low	A low level of risk.	Risk addressed by <ul style="list-style-type: none"> · Issue of updated user documentation. No change to current working practices
m	Medium	A medium level of risk	Risk addressed by <ul style="list-style-type: none"> · Issue of updated user documentation. · Client Education needed on new feature. No change to current working practice
h	High	High level of risk to the release	Risk addressed by <ul style="list-style-type: none"> · Creation of new User documentation. · User training required before application can be used in production. Changes required to current working practice

Annex 1 – Key Changes for Release 5.3.8

AMS 360 Functionality



Risk Assessment for Release 5.3.8

Kallik Reference #	Test Case Reference #	Description	Linked to Functionality	Risk to existing Data Integrity	Risk to new Data Integrity	Risk to existing functionality	Risk To User	Contingency
IN6378, nService 9027	TC3390	Enhanced field/attribute mappings when creating an approval task in the ADM screen	ADM	i	i	i	i	No contingency required
IN6346, nService 8633	TC3388, TC2154, TC2155	Images provided from an external system can now be accepted using a file name and not just a URL	SI	i	i	i	i	No contingency required
IN5849, nService 7858	NA	Several amendments made to standard project brief reporting	BM	i	i	i	i	No contingency required
IN6406, nService 9152	TC2068	A container parsing issue identified in the ADM was resolved	ADM	i	i	i	i	No contingency required
IN6380, nService 9076	TC3057, TC0484, TC1254, TC1255	The order in which locales are selected from the 'Available' to 'Selected' lists in Resource Manager are now maintained	RM	i	i	i	i	No contingency required
IN6246, nService 8437	TC0973, TC0974, TC0961, TC0962, TC0972, TC0891, TC0978	The performance of the Phrase Manager import process has been improved for the following reasons: <ol style="list-style-type: none"> 1. Prevent user updates whilst the system is synchronising data between user system and server 2. Increase the performance of the Save operation with large volumes of data 	PM	i	i	i	i	No contingency required

		3. Improve the re-render speed						
IN6375, nService 9027	TC0404	A modification was made to RM to ensure that new companies date formats were in compliance with existing formats	RM	i	i	i	i	No contingency required
IN6347, nService 8995	TC2477, TC2678	Additional data is now included in the synchronisation of translation field values to ensure that when translations are auto-populated there is no duplication of data	BM	i	i	i	i	No contingency required
IN6283, nService 8859	TC1041, TC1929	Certain dialogue boxes with a pre-populated field did not enable the OK button until the dialogue box was moved, this has been resolved	ADM	i	i	i	i	No contingency required
IN5998, nService 8371	TC3407, TC1628	A specific situation could occur where a completed task would remain in the user's inbox, this has been resolved	BM	i	i	i	i	No contingency required
RQ1477	TC3387, TC3400, TC3399, TC3386, TC3389, TC3397	Functionality has been implemented to allow the AAGs to utilise load balancing across multiple instances. This is configurable per customer	AAG	i	i	i	i	No contingency required
RQ1722	TC3392, TC3393, TC3394, TC2295	Functionality has been implemented to allow triggering of file exports from ADM to allow for print tests	ADM	i	i	i	i	No contingency required
RQ1718	TC3402, TC3403, TC3404, TC3405, TC3406, TC3408, TC3420, TC3416, TC3417, TC3409	Functionality has been implemented to allow users with particular roles to batch start projects based on a component list in a results folder	PBP	i	i	i	i	No contingency required

RQ1719	TC3410, TC3411, TC3412	Functionality has been implemented to allow users with particular roles to batch update specific stale data in projects	PBP	i	i	i	i	No contingency required
--------	---------------------------	---	-----	---	---	---	---	-------------------------

Appendix

IN6461 contains further modifications and improvements to the new Factory Labelling module.