



Software Deployment Risk Matrix



Customer

NA

DOCUMENT CONTROL

Copyright © Kallik, 2017

Reference Code : SDRM - 052
Revision : 1.0
Issue Date : 3rd November 2017
Re-Issue Date : NA
Author(s) : Quality Manager
Authorizer(s) : COO
Issuer : Quality Manager

DOCUMENT HISTORY

Date	Revision	Change
26 th October 2017	0.1	First Draft
3 rd November 2017	1.0	Customer Release

Table of Contents

Software Deployment Risk Matrix	1
DOCUMENT CONTROL	2
Table of Contents	3
Document Overview	4
What is Risk?	4
Levels of Risk	4
Risk Categorisation	4
Supplementary	4
Annex 1 - Key Changes for Release 5.4	5
Risk Assessment for Release 5.4	6
Enhancements	6
Bug Fixes	9
Appendix	12

Document Overview

This document has been created as a guide to help clients understand the “risk” of the deployment of a new software release.

The document will detail the main areas where enhancements have been made to the applications and the level of risk associated to deploying the new release.

What is Risk?

Risk is defined as the possibility of suffering a loss. Risk in itself is not bad. Risk is essential to progress and failure is often a key part of learning. Managing risk is a key part of success.

When deploying a new software release, the risks can be broken down into different types

1. Risk to existing data integrity - will there be any impact on data currently held in the application?
2. Risk to new data integrity - will there be any impact on any new data uploaded into the application?
3. Risk to existing functionality - will there be an impact on how the existing functionality works?
4. Risk To User - will there be any changes to current working practices for the users

Levels of Risk

The purpose of the following table is to explain:-

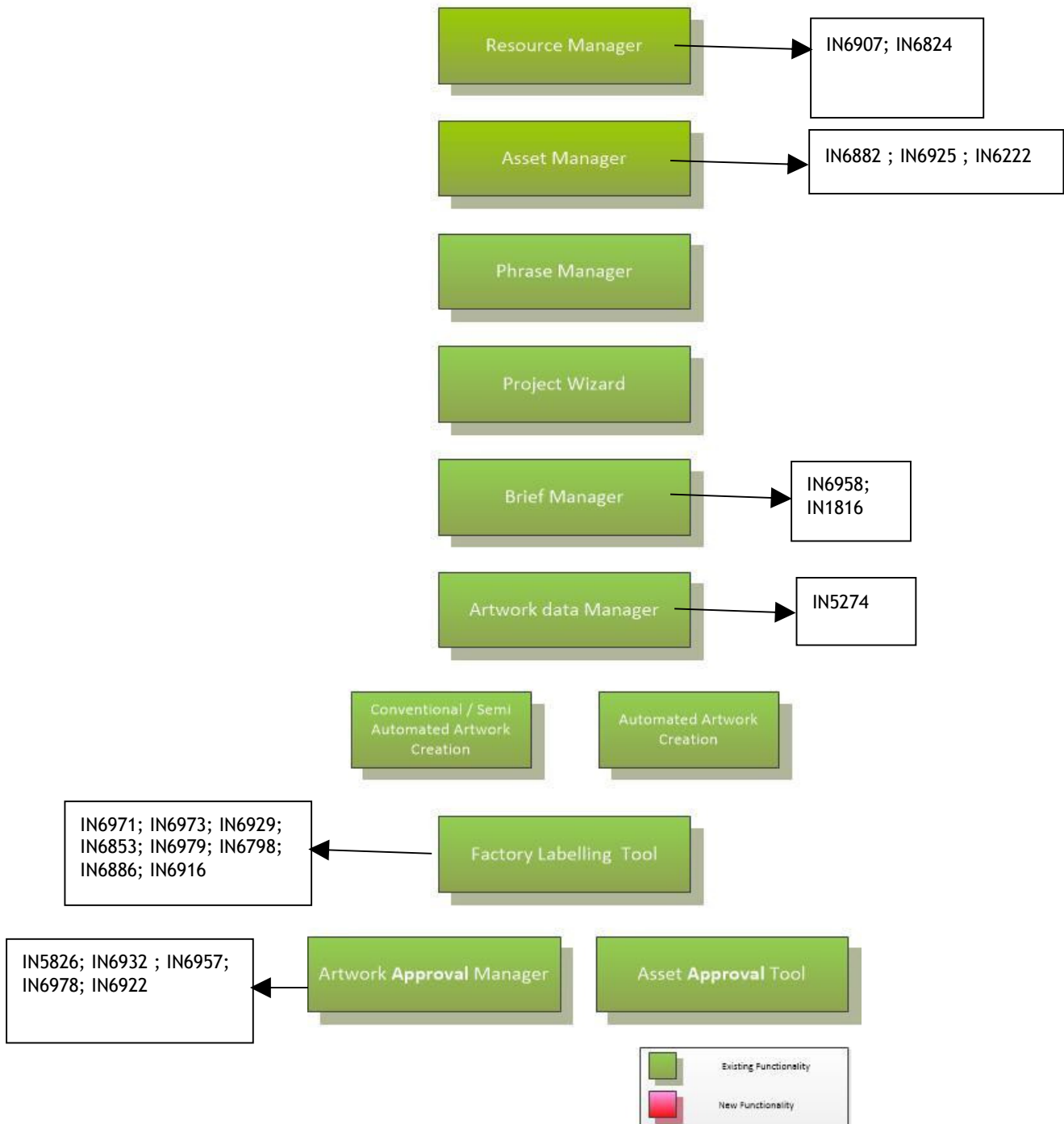
1. How Kallik categorise the level of risk
2. What supplementary action would be required
3. What level of risk is associated to the release. This is shown in detail

Risk Categorisation

Indicator	Risk level	Description	Supplementary
○	None	No risk to release	No impact to user
●	Low	A low level of risk.	Risk addressed by <ul style="list-style-type: none">● Issue of updated user documentation. No change to current working practices
●	Medium	A medium level of risk	Risk addressed by <ul style="list-style-type: none">● Issue of updated user documentation.● Client Education needed on new feature. No change to current working practice
●	High	High level of risk to the release	Risk addressed by <ul style="list-style-type: none">● Creation of new User documentation.● User training required before application can be used in production. Changes required to current working practice

Annex 1 – Key Changes for Release 5.4.1

AMS 360 Functionality



Risk Assessment for Release 5.4.1

Enhancements

Kallik Reference #	Test Case Reference #	Description	Linked to Functionality	Risk to				Contingency
				existing data integrity	new data integrity	existing functionality	user	
RQ:2080 IN:6952 IN:6959 IN:6960	TC3887, TC3886, TC3885	<p>Further security enhancements have been applied to AMS as part of our continued improvement programme. From this release, AMS will only accept connections using TLS 1.1 and TLS 1.2, with other technologies including SSL 3.0 and TLS 1.0 no longer accepted. We recommend that the following tests be performed by key users and clients to ensure that any incompatibilities or issues can be addressed before the live release:</p> <p>Login/Logout via all supported browsers (IE11, Firefox ESR52, Chrome). File Upload via Asset Manager and Workflow Manager File Download via Asset Manager</p>	AMS	○	○	○	●	Areas of the system to test have been noted.

AMS Deployment Risk Matrix

		Web service integration (project imports, phrase imports, work order imports) Local Tools – AMS Cascade, ScanTVS, ViewOne/Daeja Supporting material available.						
IN:5274 nService #6630	TC3877, TC3879	ADM - Field mappings in the ADM can now be concatenated into a single field. Note that this is configurable per client. Supporting Material available.	ADM	○	○	○	○	
IN:6986 nService #10710	NA	BI – The “AM Artwork Status – Current” report has been updated. Note: Client specific change.	BI	○	○	○	○	No contingency required
IN:6958 nService #10558	TC3904	BM - Translation inheritance where Master/Regional artworks are used can now be enabled/disabled. Note that this is configurable per client. Supporting materials available.	BM	●	●	○	○	No contingency required
IN:6882	TC692	DAM – Improved logging has been implemented to assist with Support issues.	DAM	○	○	○	○	No contingency required
IN:6971	TC3923	FL - A change has been made to the data displayed on the asset card. This is client specific.	FL	○	○	○	○	No contingency required
IN:6973	TC3525	FL – A change has been made to a Print Flow . This is client specific.	FL	○	○	○	○	No contingency required
IN: 6929	TC3396, TC3001, TC3010, TC3016, TC3020,	FL - Improvements have been made to the response time when searching for work orders to print.	FL	○	○	○	○	No contingency required

AMS Deployment Risk Matrix

	TC3471, TC3492, TC3529, TC3495, TC3496, TC3472, TC3516							
IN:6907	TC2838	RM - The Audit Log no longer performs a search when it is first loaded to allow the user to control the search criteria and speed up the initial page load process. Supporting materials available.	RM	o	o	o	o	No contingency required
IN:6836 nService #10067	TC1816, TC1844	SI - Improvements in the monitoring of the Service Integrator module including FTP transmissions and Web Service integration have been made.	SI	o	o	o	o	No contingency required
IN:5826 nService #7801	TC3891, TC3892, TC3893, TC3916, TC3917, TC3918, TC3919, TC3920, TC3921	WM – It is now possible to bulk Complete Tasks for Account Manager and Project Manager in the following workflows: C2 Standalone ; C5 Configurable ; C4 Standalone ; C4 Configurable. Supporting materials available.	WM	o	o	o	o	No contingency required

Bug Fixes

General AMS

Kallik Reference #	Test Case Reference #	Description	Linked to Functionality	Risk to				Contingency
				existing data integrity	new data integrity	existing functionality	user	
IN:6963 nService #9976	NA	AMS – The GV Inspection Report header has been updated on a specific Client’s report.	AMS	○	○	○	○	No contingency required
IN:6964 nService #10532	TC3906	AL – In the Asset Lifecycle module comments can no longer be added once the workflow is complete. Supporting material available.	AL	○	○	○	○	No contingency required
IN:6965 nService #10548	TC3908	BM – An issue that was preventing the What’s Changed Report from loading correctly due to a client specific Form Definition has been resolved.	BM	○	○	○	○	No contingency required
IN:1816 nService #9835	TC297	BM – It is no longer possible to progress through the Project Wizard unless at least one Region has been selected. Supporting material available.	BM	○	○	○	○	No contingency required
IN:6925 nService #10424	TC2682	DAM - It is no longer possible to select OK if no valid region has been selected in the attributes section. Supporting material available.	DAM	○	○	○	○	No contingency required

AMS Deployment Risk Matrix

IN:6222 nService #8764	TC3915	DAM - If an attribute is set to not searchable then it will not be returned in an Advanced search. Supporting material available.	DAM	●	●	○	○	No contingency required
IN:6853	TC3425	FL - An issue on the Label Review screen whereby the scrollbar was not present on some browsers has been corrected. Supporting material available.	FL	○	○	○	○	No contingency required
IN:6979 nService #10681	TC3042	FL – A defect has been corrected that could allow the print status to be incorrectly updated when specific actions were taken.	FL	○	○	○	○	No contingency required
IN:6798 nService #10652	TC3492, TC3529, TC3496, TC3495, TC3516, TC3001, TC3016, TC3913	FL – A defect was identified whereby a process may not be completed if a tag was missing in the label template. To correct this we have added the ability to configure new tags dynamically that are not present on the label template.	FL	○	○	○	○	No contingency required
IN:6886	TC3001, TC3010, TC3016, TC3020, TC3471, TC3492, TC3529, TC3495, TC3496, TC3472	FL - A new version of the Factory Print Automation Service is available which includes performance improvements for large print jobs. Please contact your Account Manager or Kallik Support for more details.	FL	○	○	○	○	No contingency required
IN:6916	TC3100,	FL – Improvements have been made	FL	○	○	○	○	No contingency

AMS Deployment Risk Matrix

nService #10399	TC3396	within the Print Submission Status Check routine to ensure the correct values are being set.						required
IN:6824 nService #10011	TC3890	RM – It is no longer possible to delete an Access Group if it is still in use. Supporting material available.	RM	o	o	o	o	No contingency required
IN:6932 nService #10451	TC2934	WM – Print files with a comma in the filename no longer cause an error in Chrome web browser. Supporting material available.	WM	o	o	o	o	No contingency required
IN:6957 nService #10556	TC1966, TC1967, TC1968, TC1948	WM - An issue when re-assigning a task that resulted in an error message being displayed has been corrected. Supporting material available.	WM	o	o	o	o	No contingency required
IN:6978 nService #10658	TC1764	WM – An error produced when loading old style AL/AAM workflows has been resolved.	WM	o	o	o	o	No contingency required
IN:6922 nService #10279	TC3912	AM/WF – Within the configurable Field Mappings structure, translatable field values will use the Master data values. Supporting material available.	WM	o	o	o	o	No contingency required

Appendix

This page left intentionally blank.